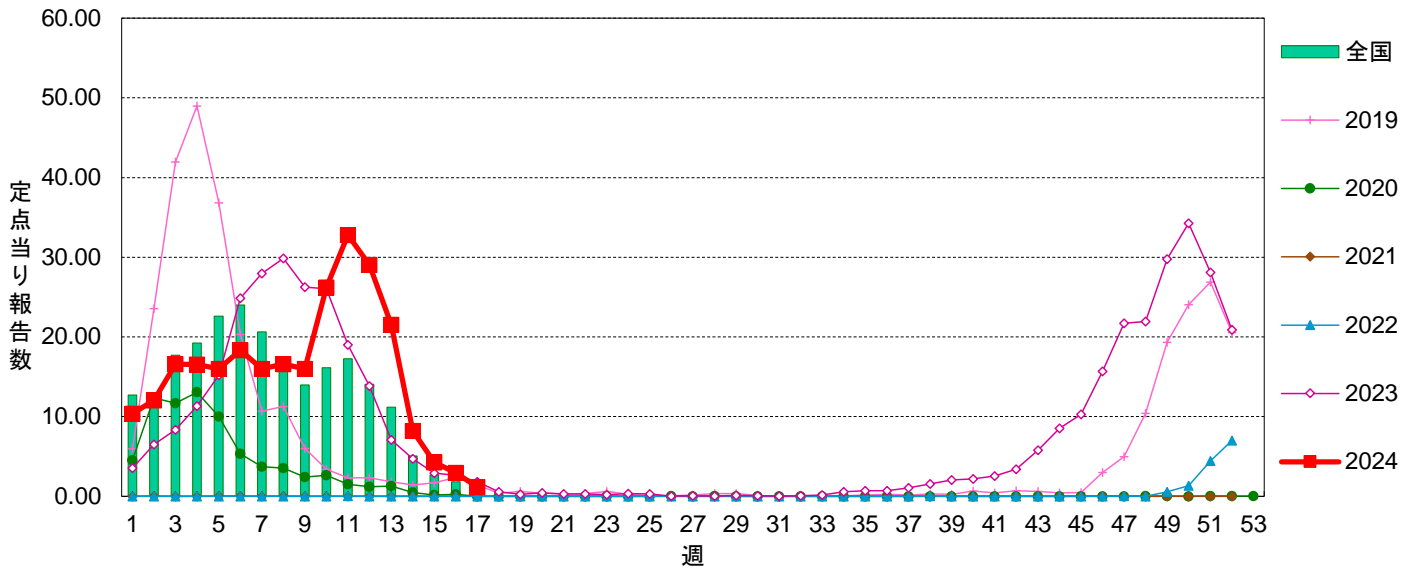


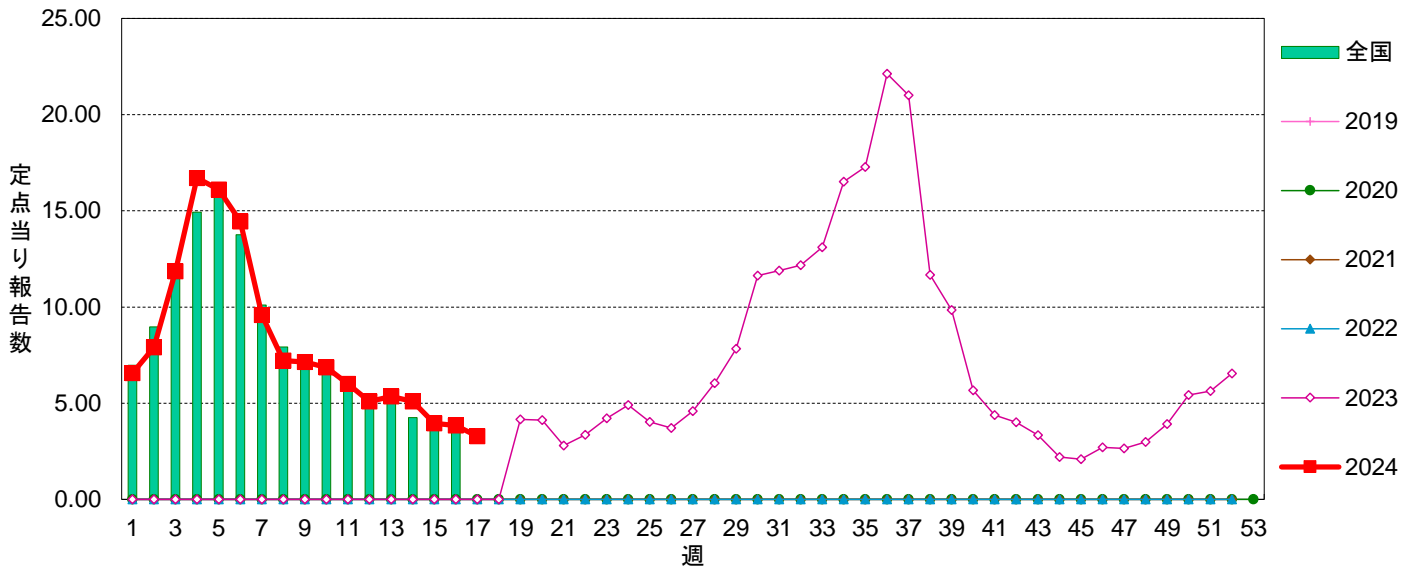
■ グラフ総覧(2024年第17週)

定点当り報告数グラフ

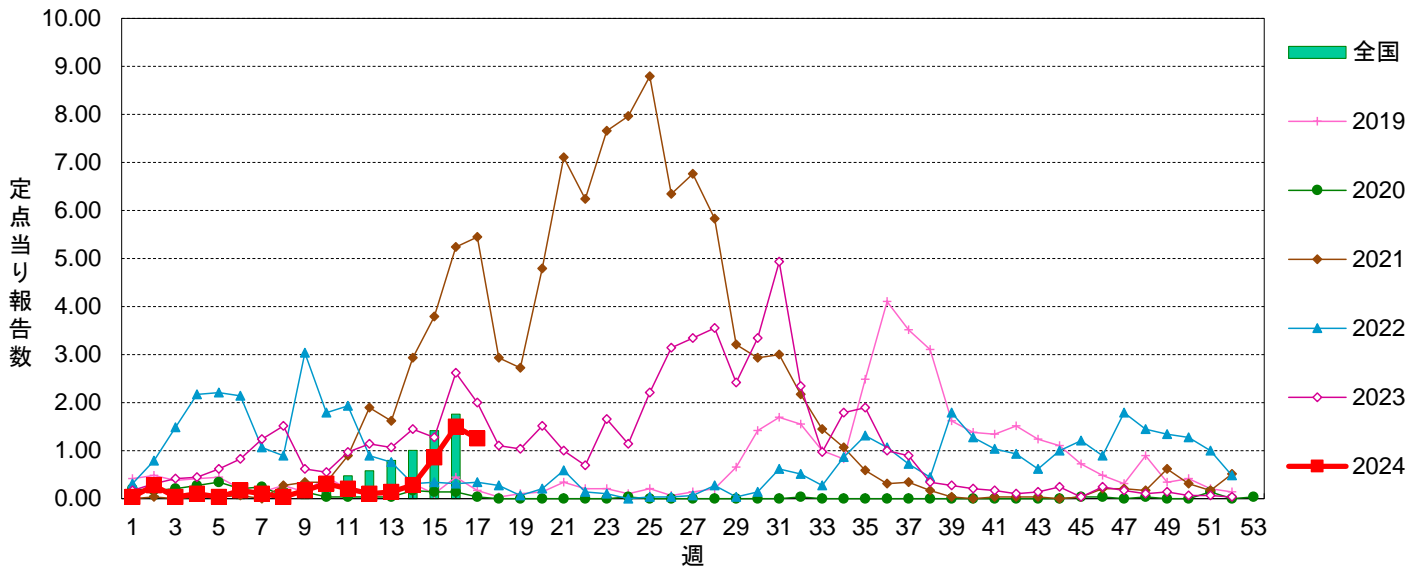
インフルエンザ



COVID-19

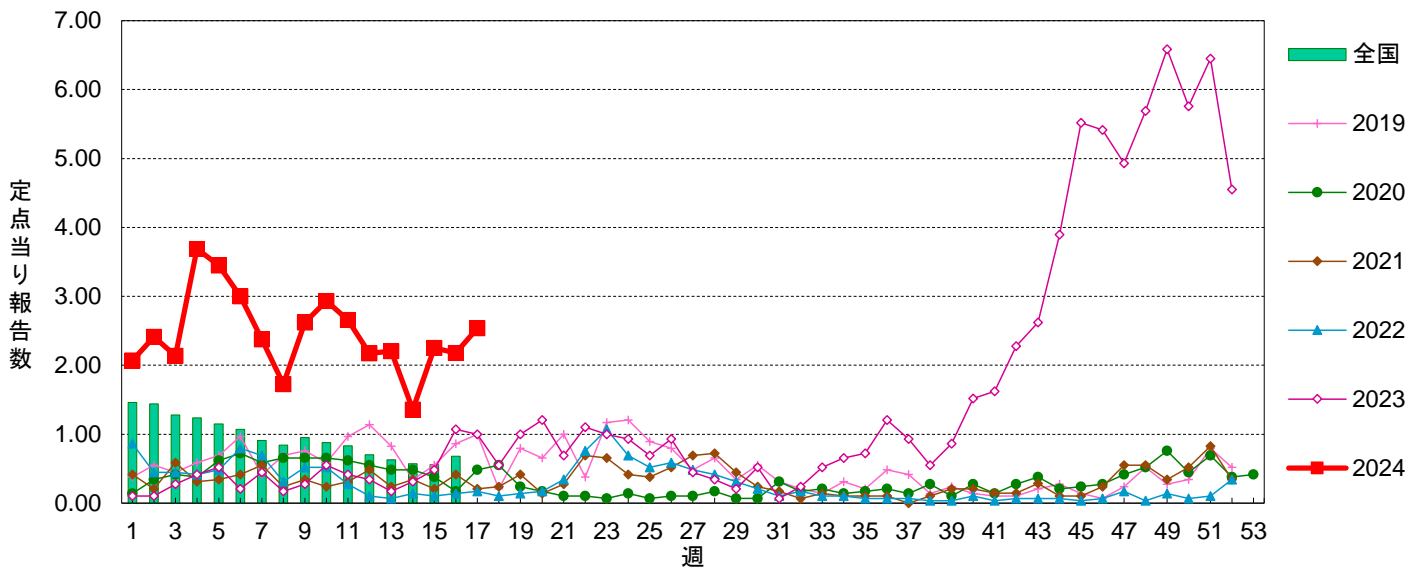


RSウイルス感染症

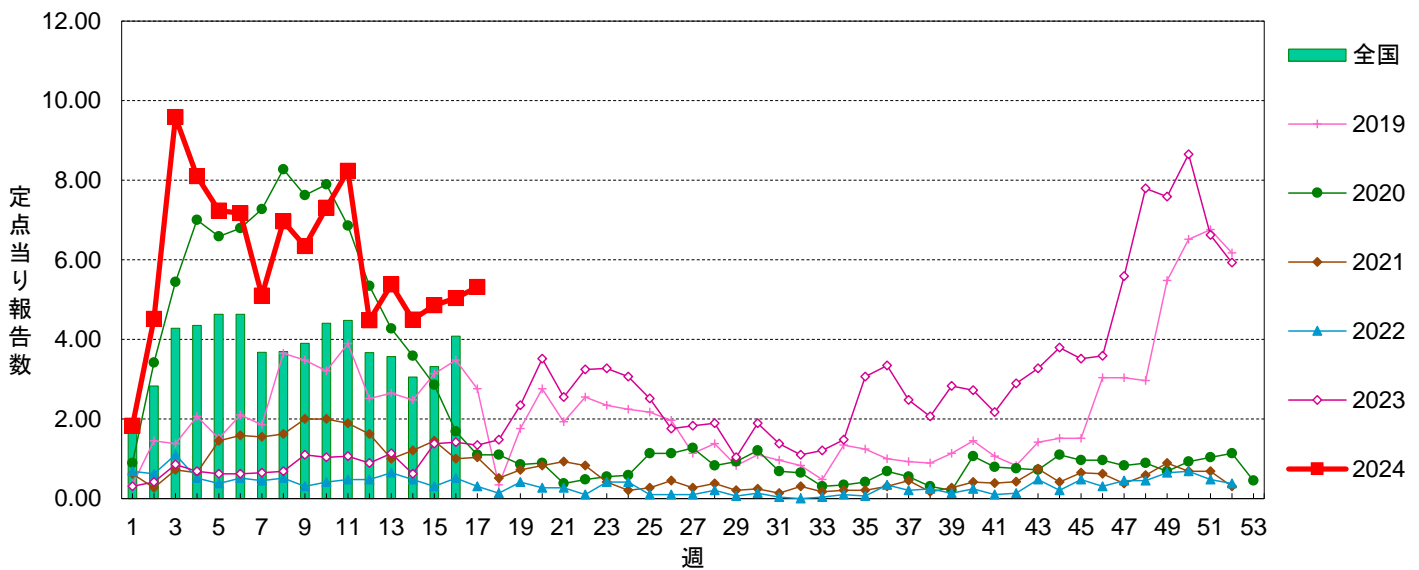


定点当り報告数グラフ

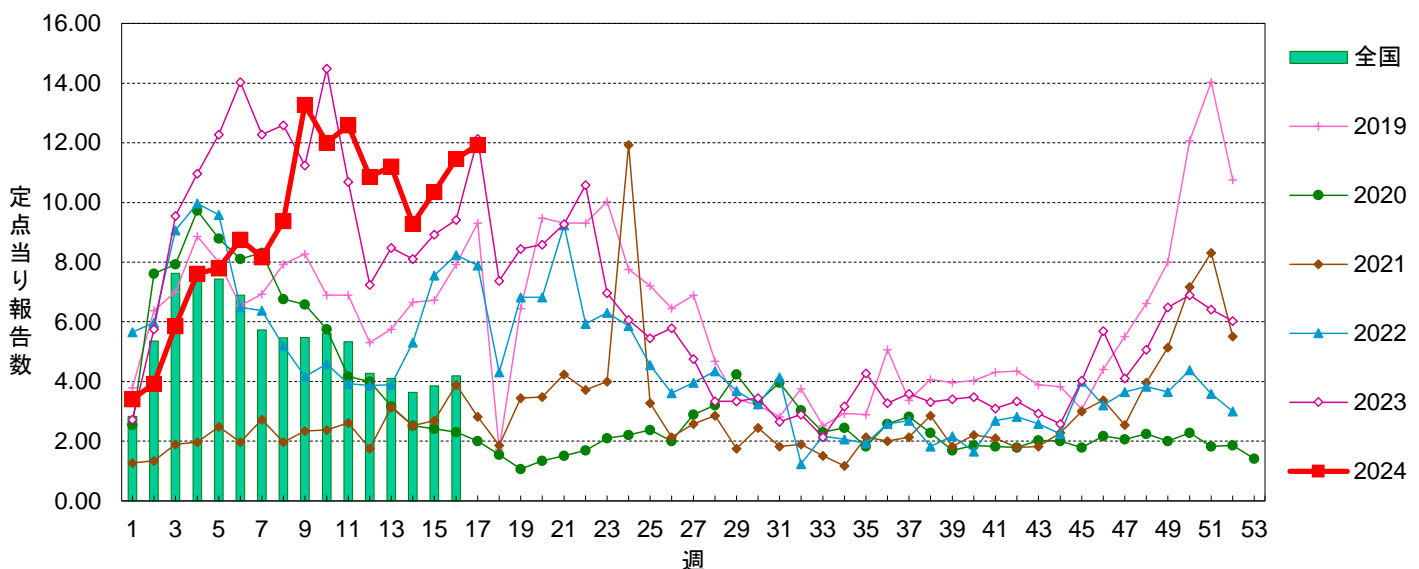
咽頭結膜熱



A群溶血性レンサ球菌咽頭炎

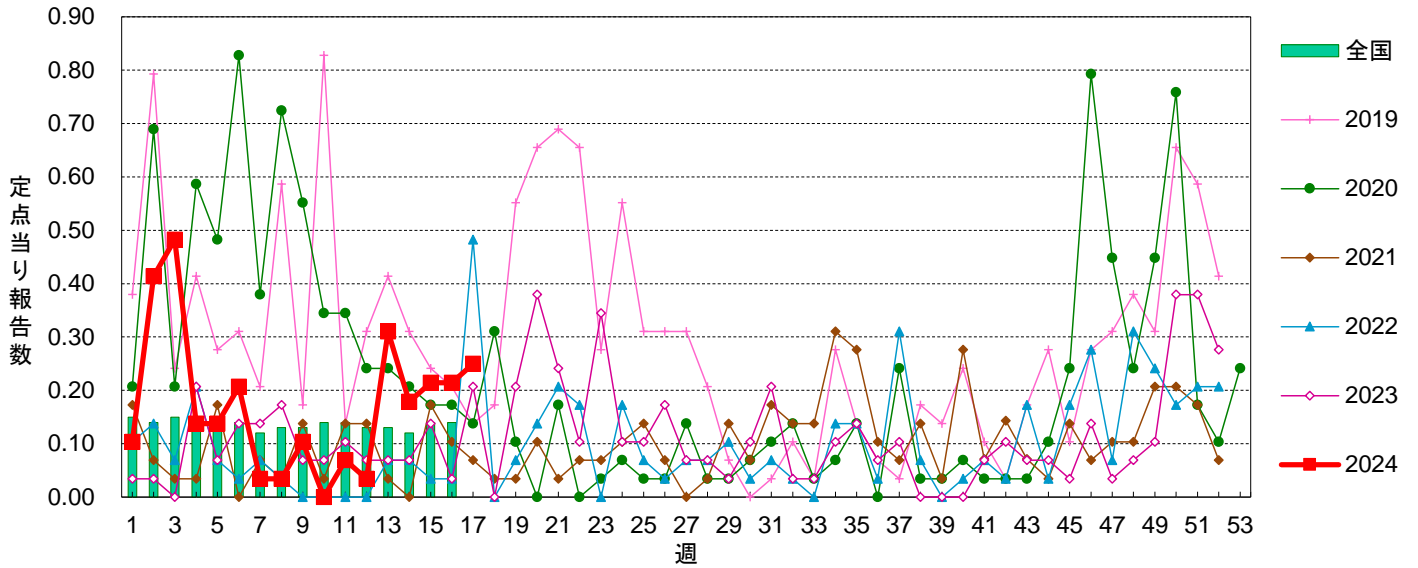


感染性胃腸炎

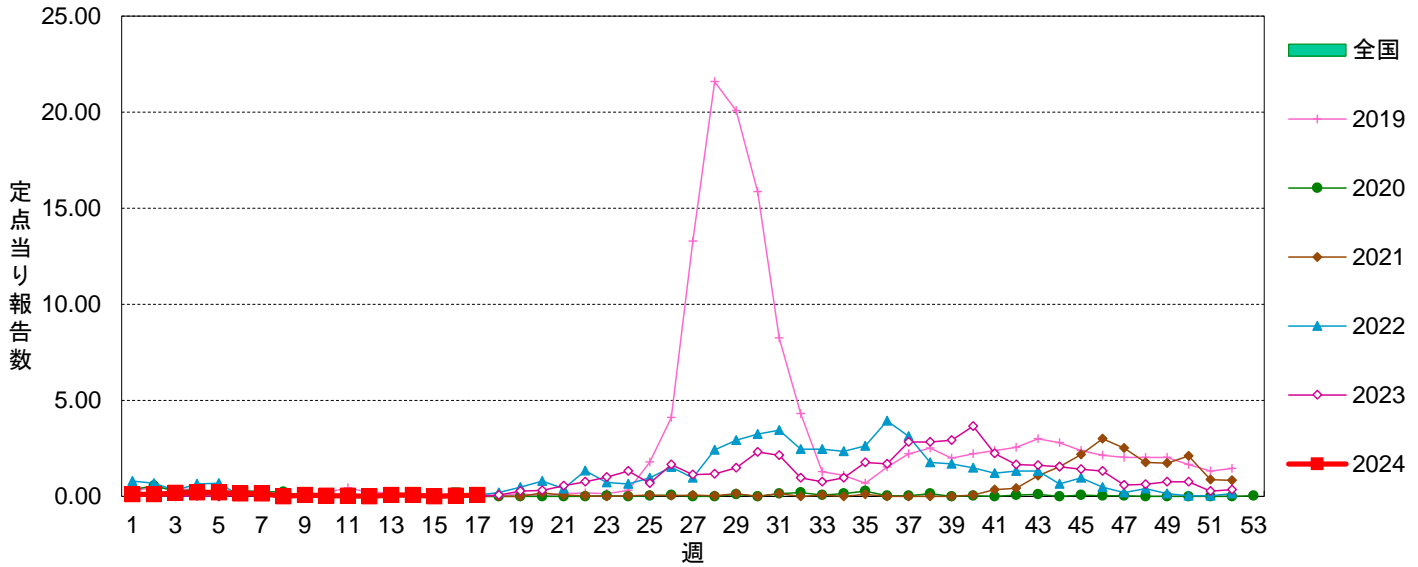


定点当り報告数グラフ

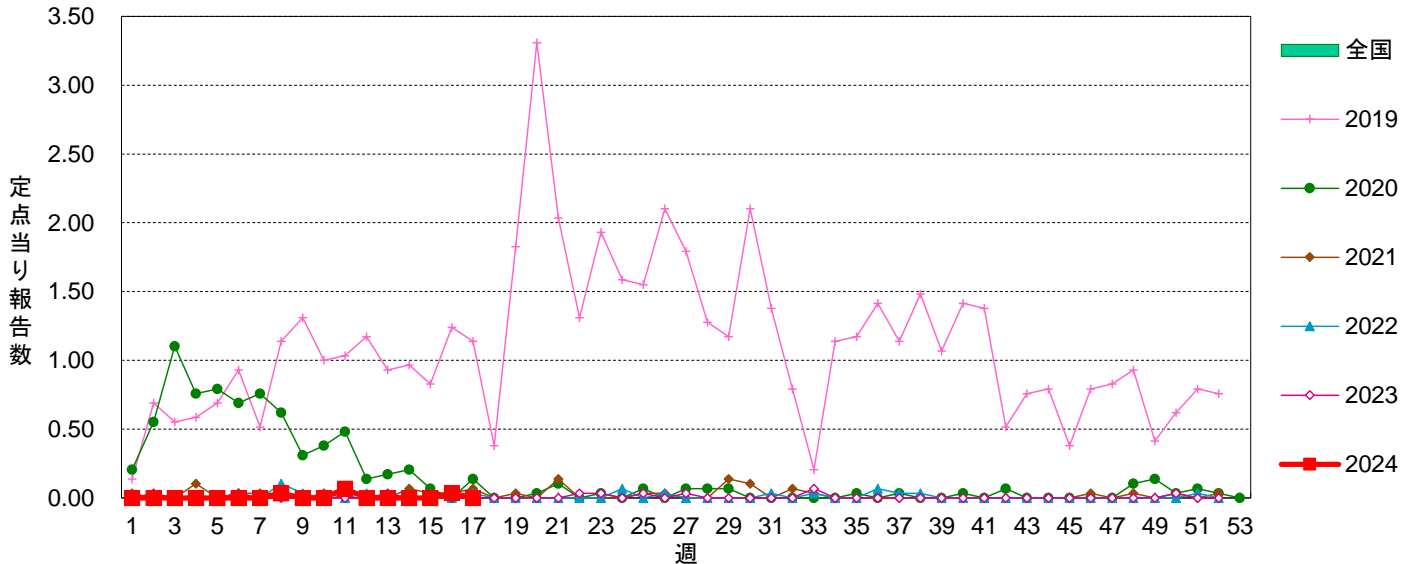
水痘



手足口病

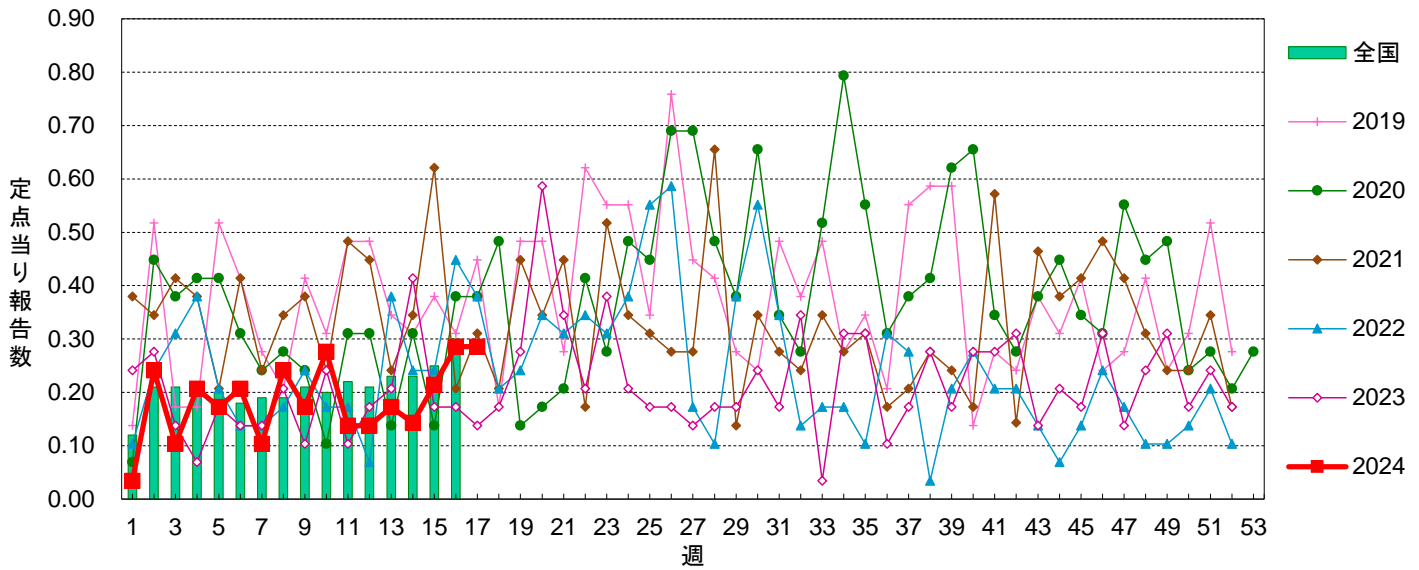


伝染性紅斑

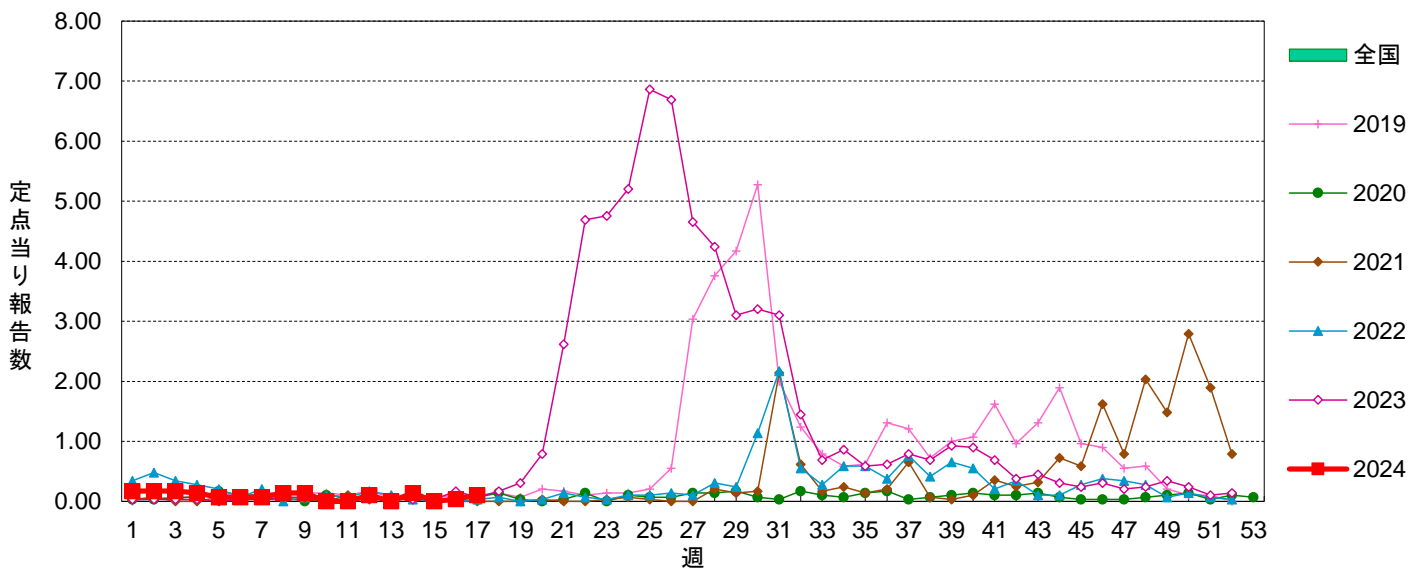


定点当り報告数グラフ

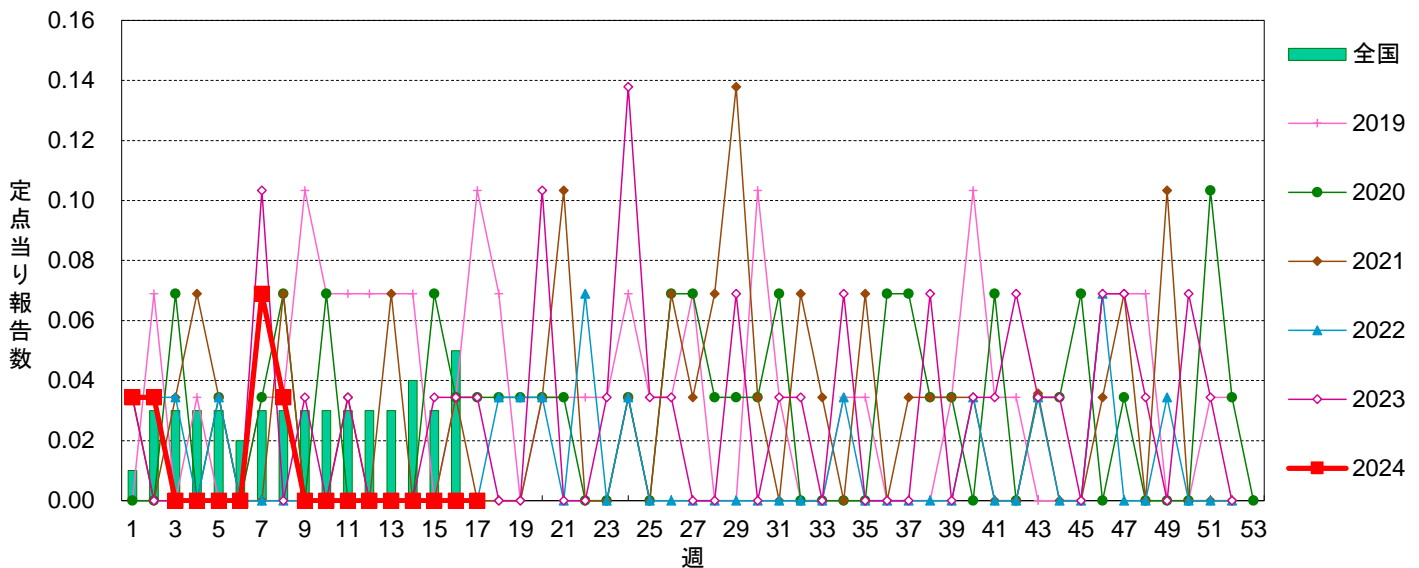
突発性発しん



ヘルパンギーナ

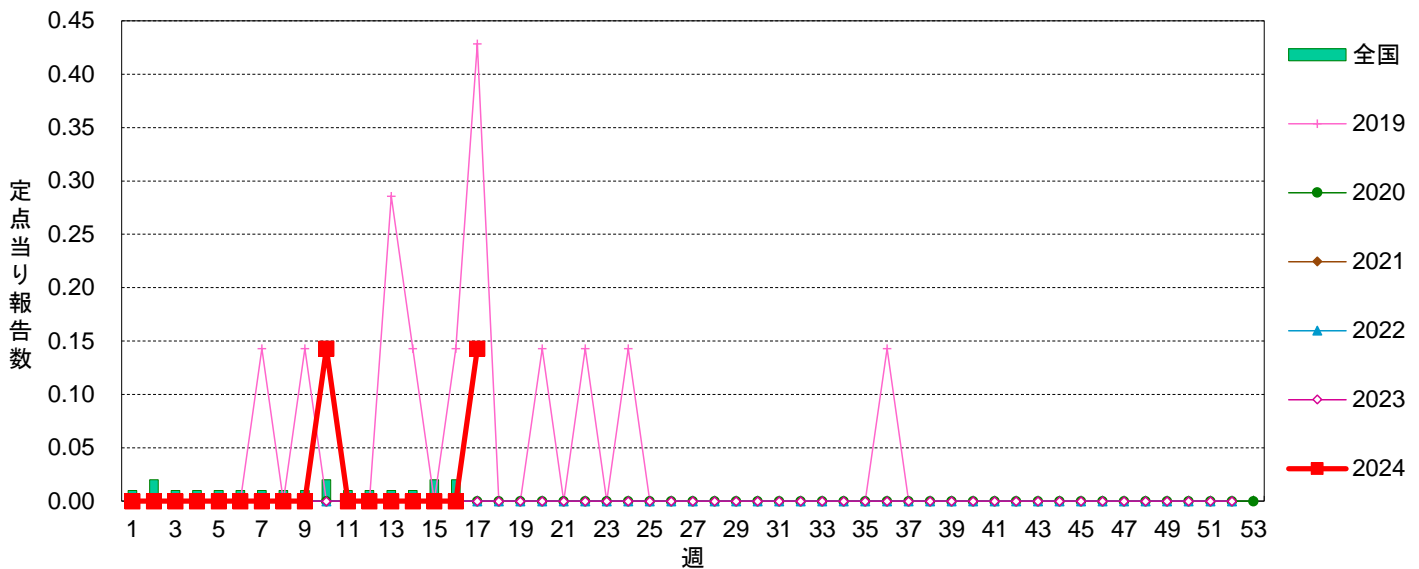


流行性耳下腺炎

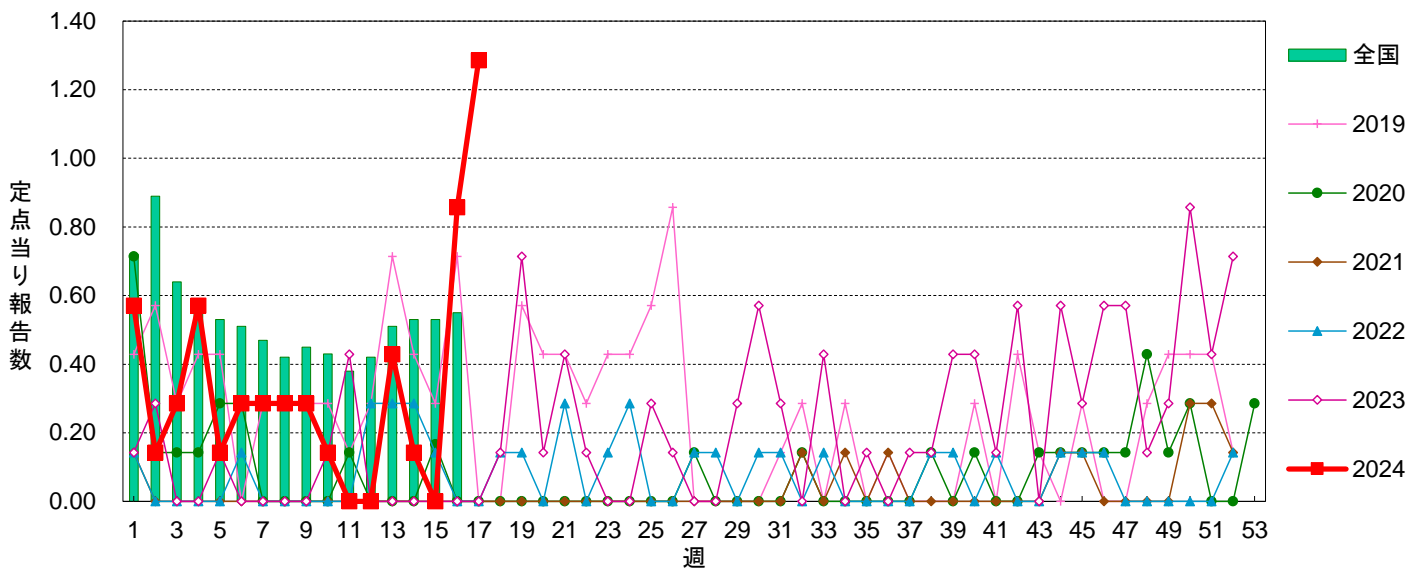


定点当り報告数グラフ

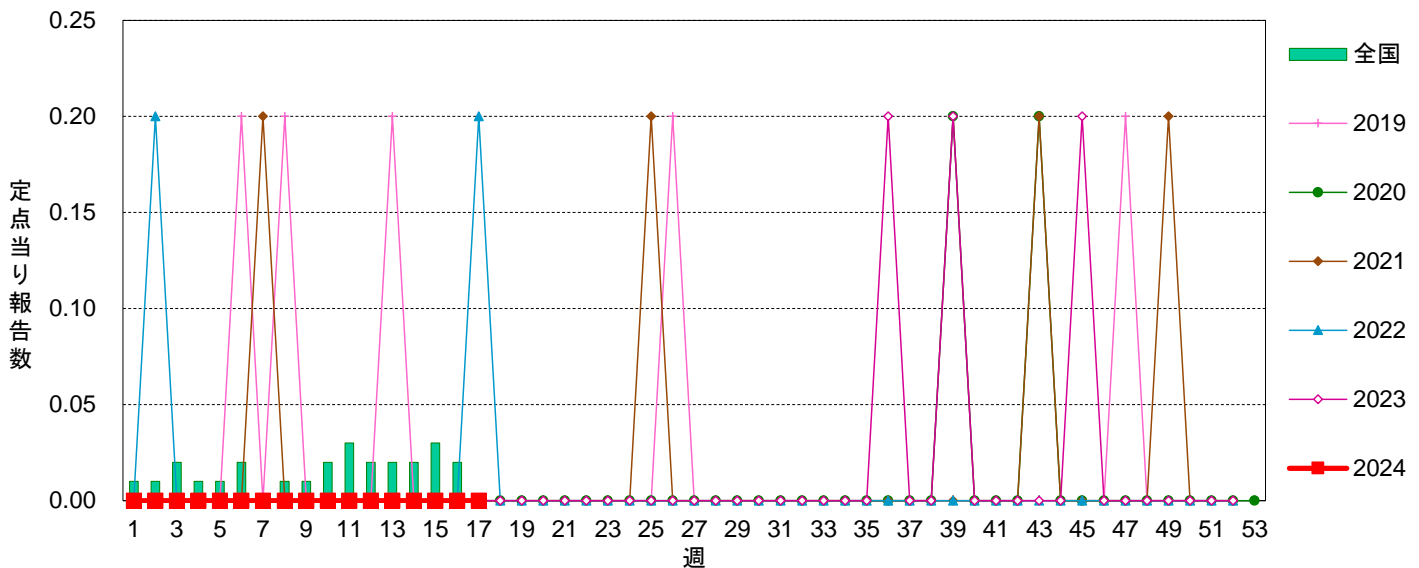
急性出血性結膜炎



流行性角結膜炎

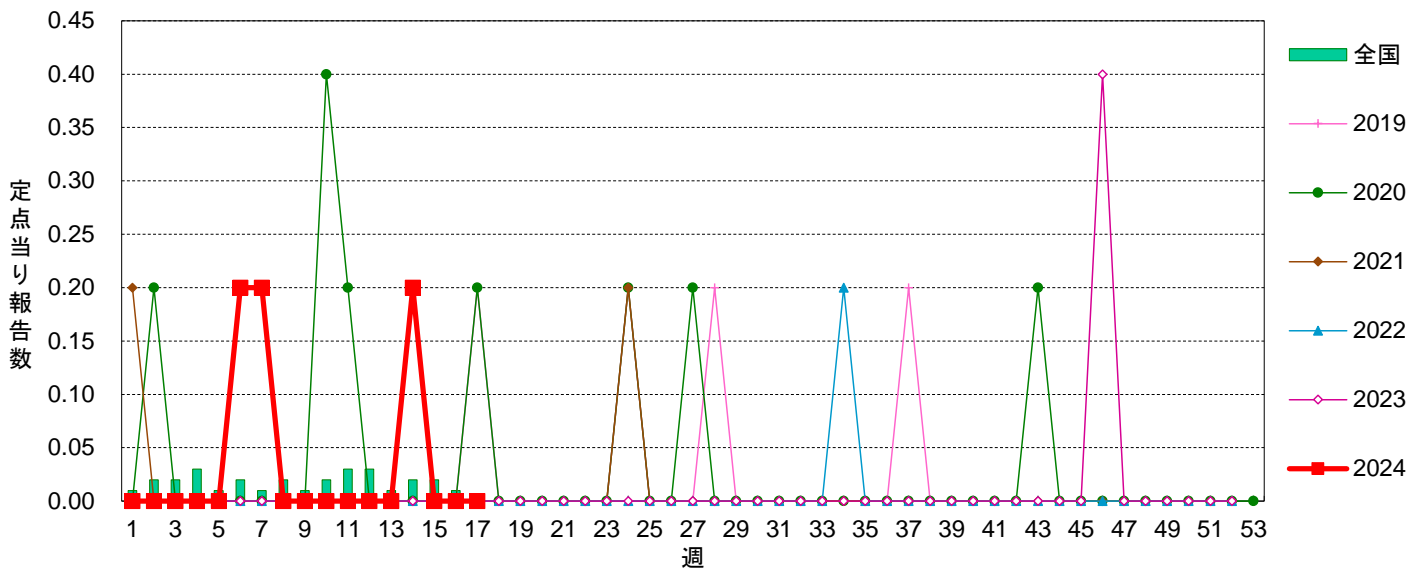


細菌性髄膜炎

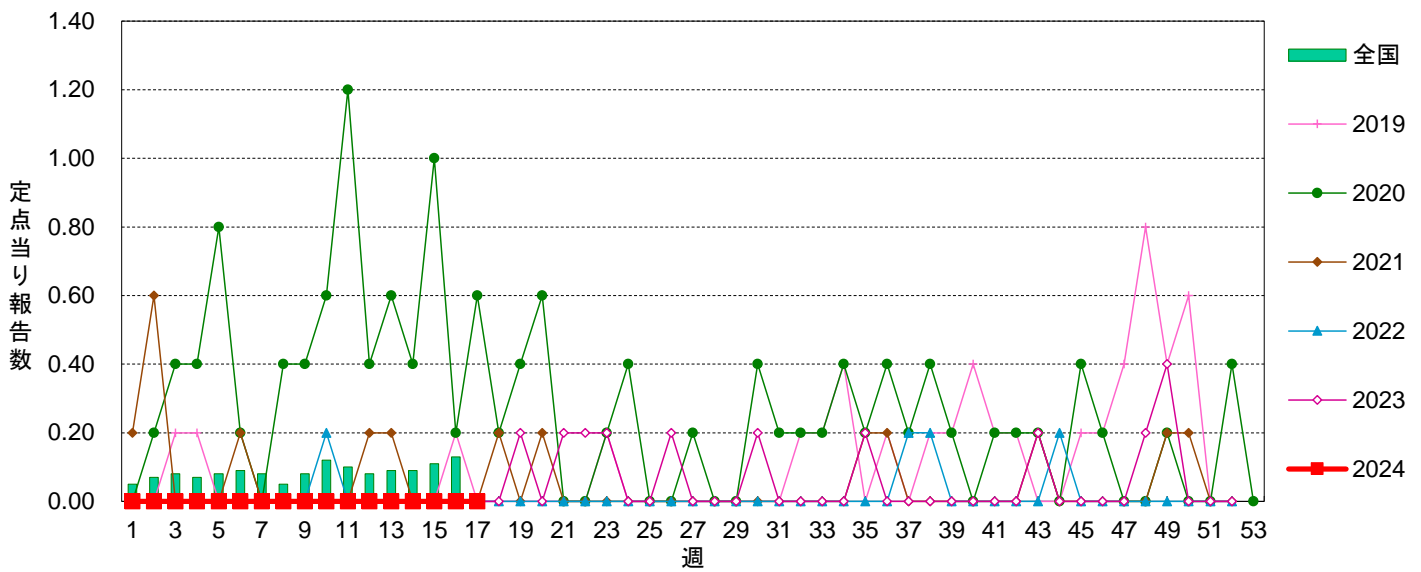


定点当り報告数グラフ

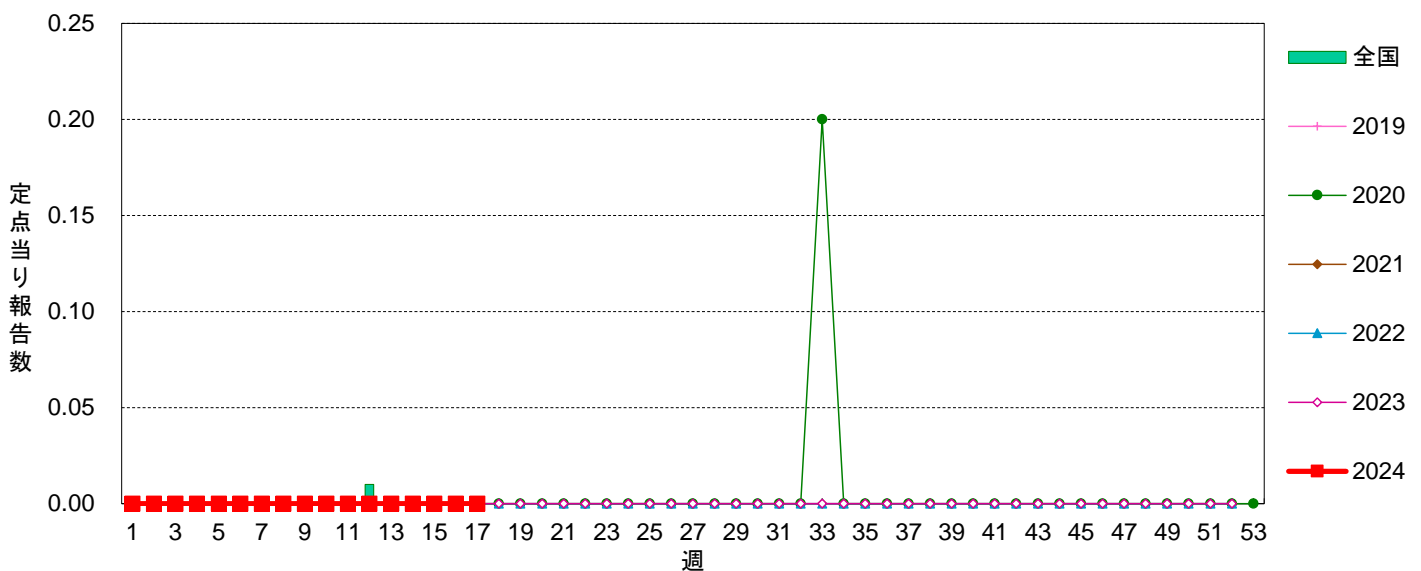
無菌性髄膜炎



マイコプラズマ肺炎



クラミジア肺炎



定点当り報告数グラフ

感染性胃腸炎(ロタウイルス)

