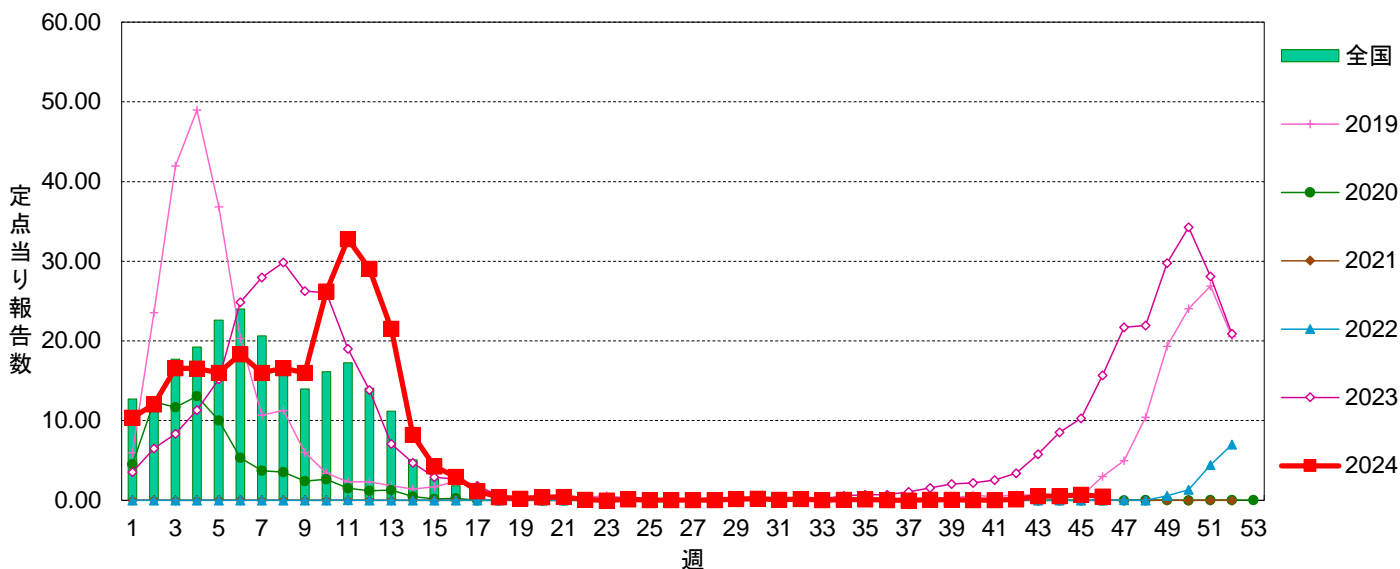


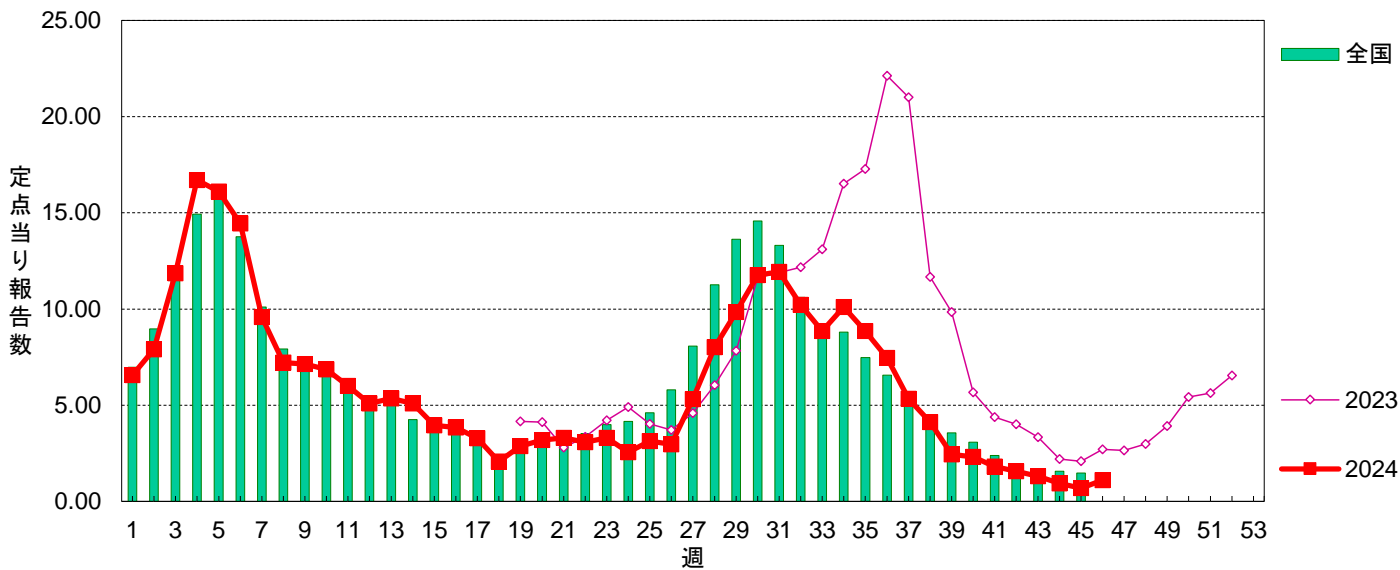
## ■ グラフ総覧(2024年第46週)

定点当り報告数グラフ

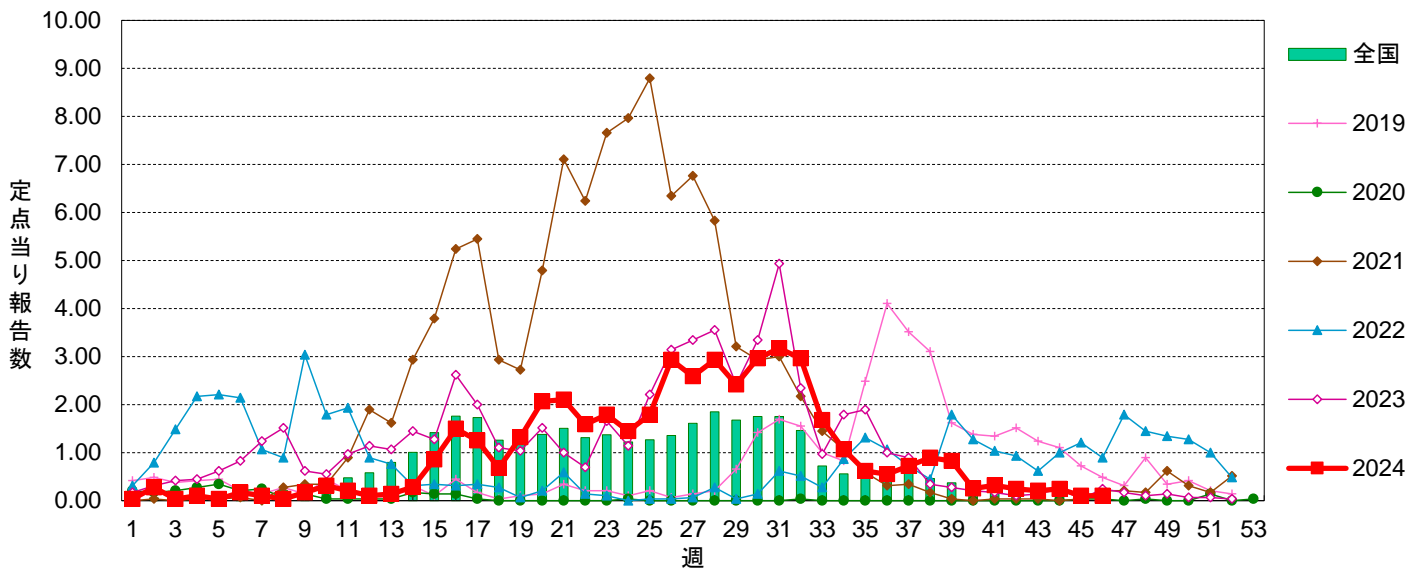
### インフルエンザ



### COVID-19

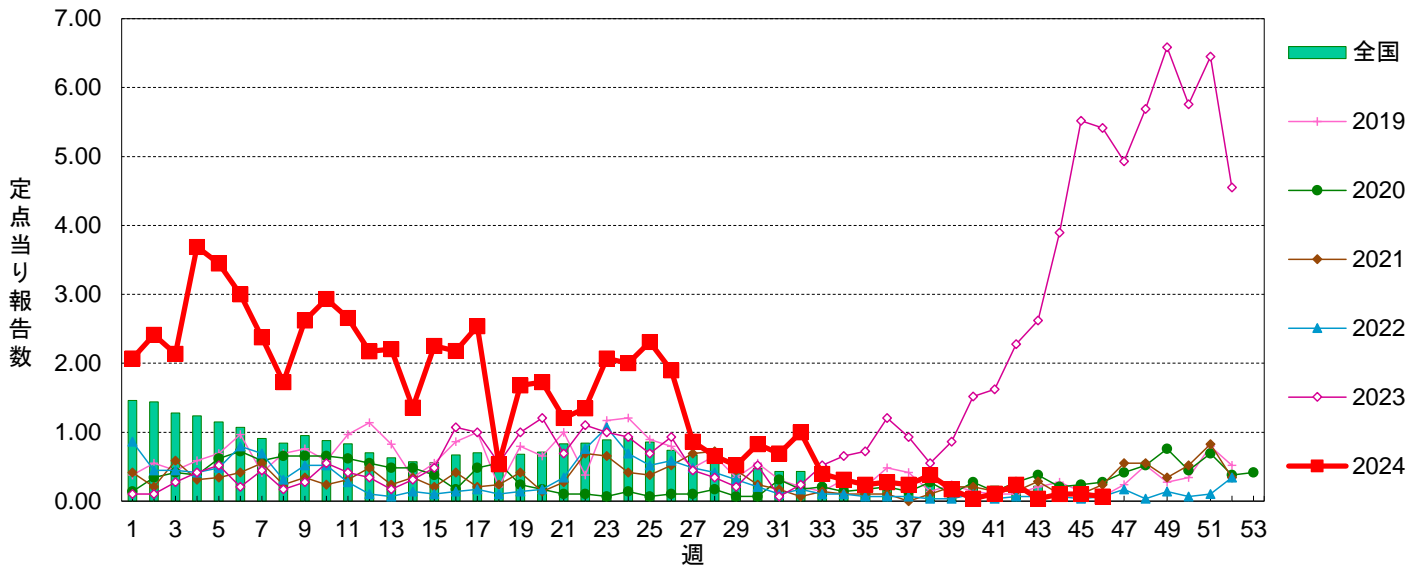


### RSウイルス感染症

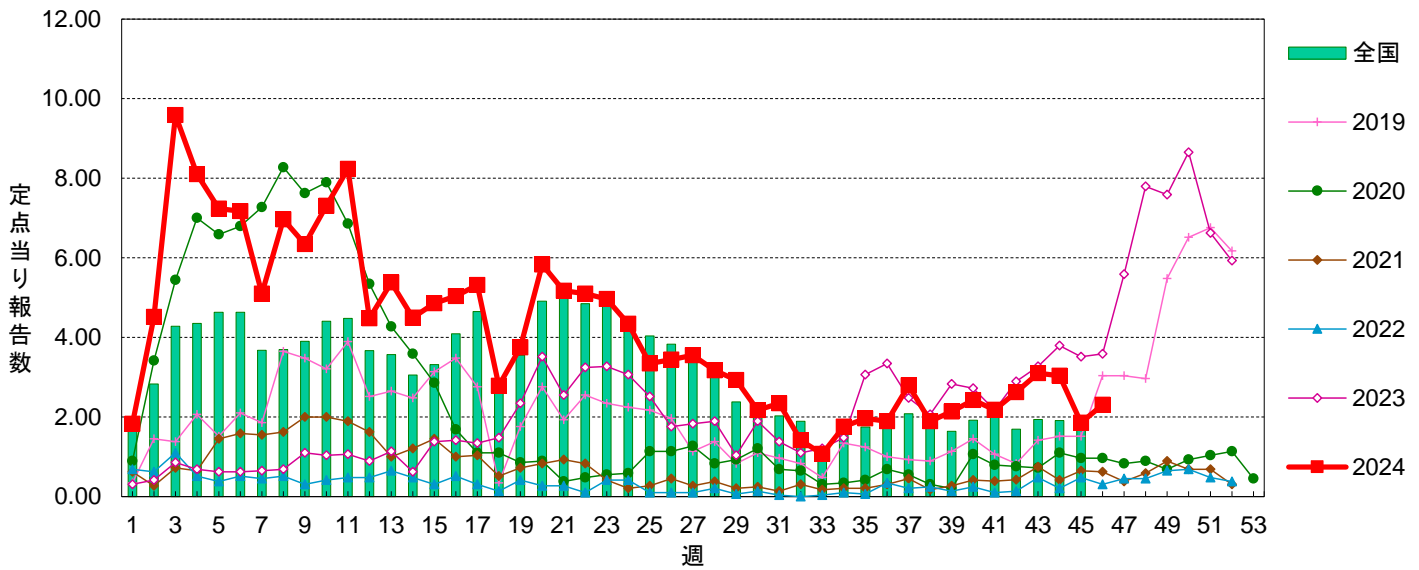


定点当り報告数グラフ

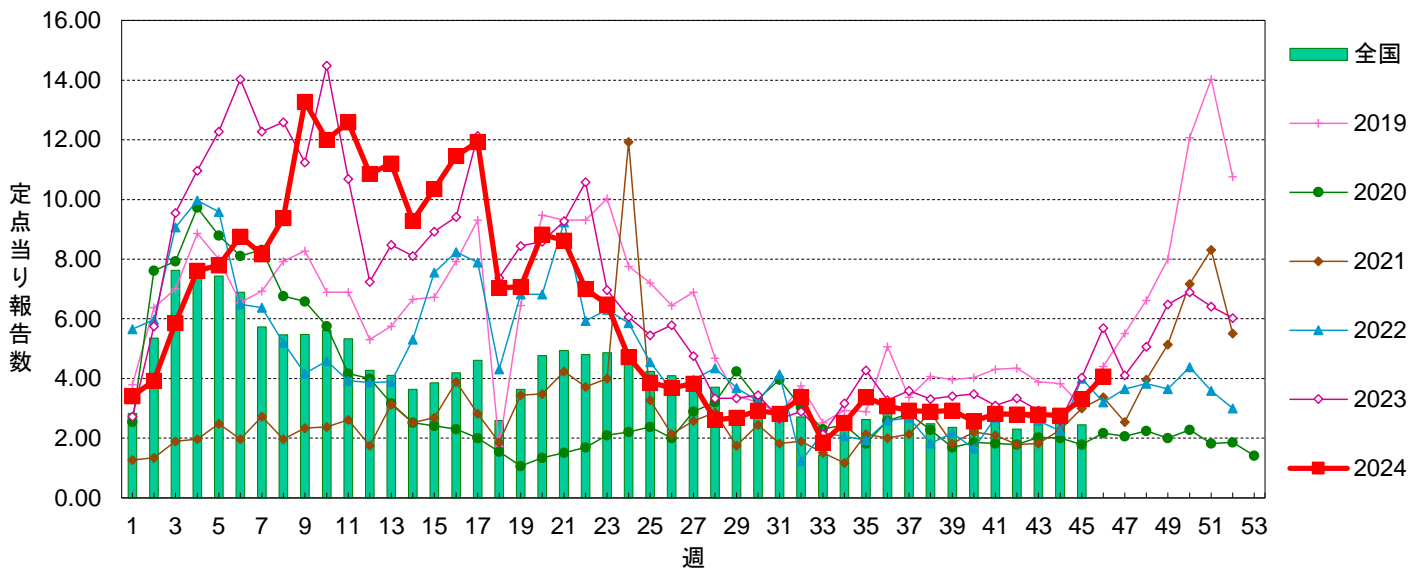
咽頭結膜熱



A群溶血性レンサ球菌咽頭炎

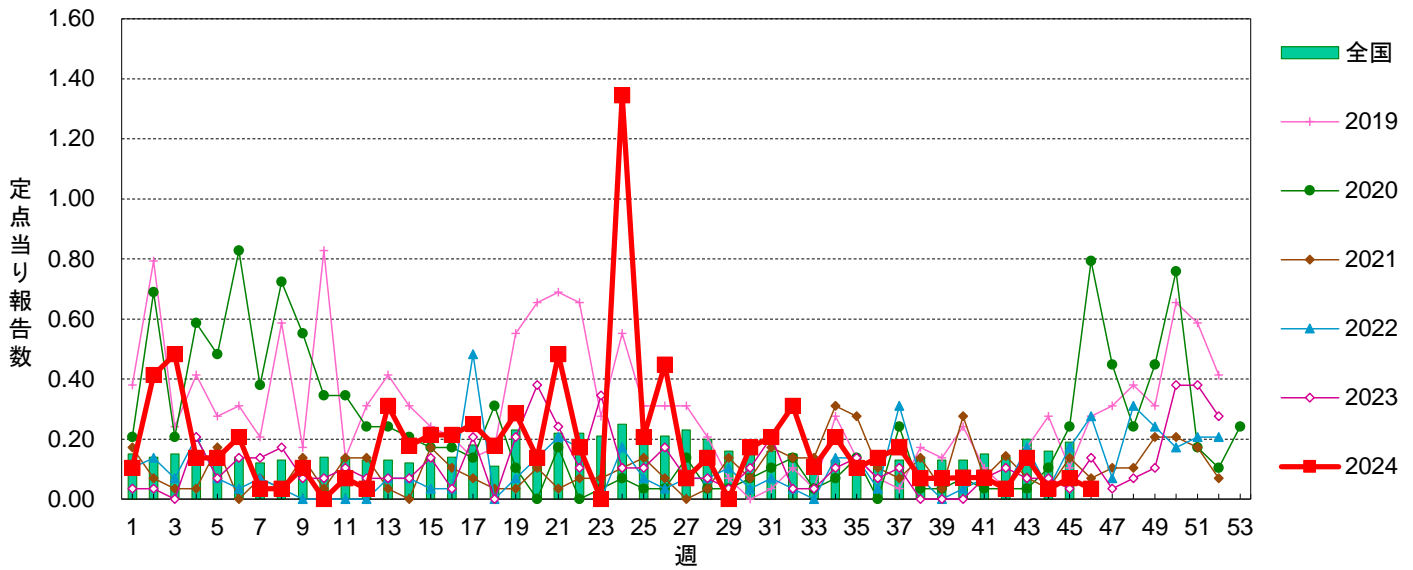


感染性胃腸炎

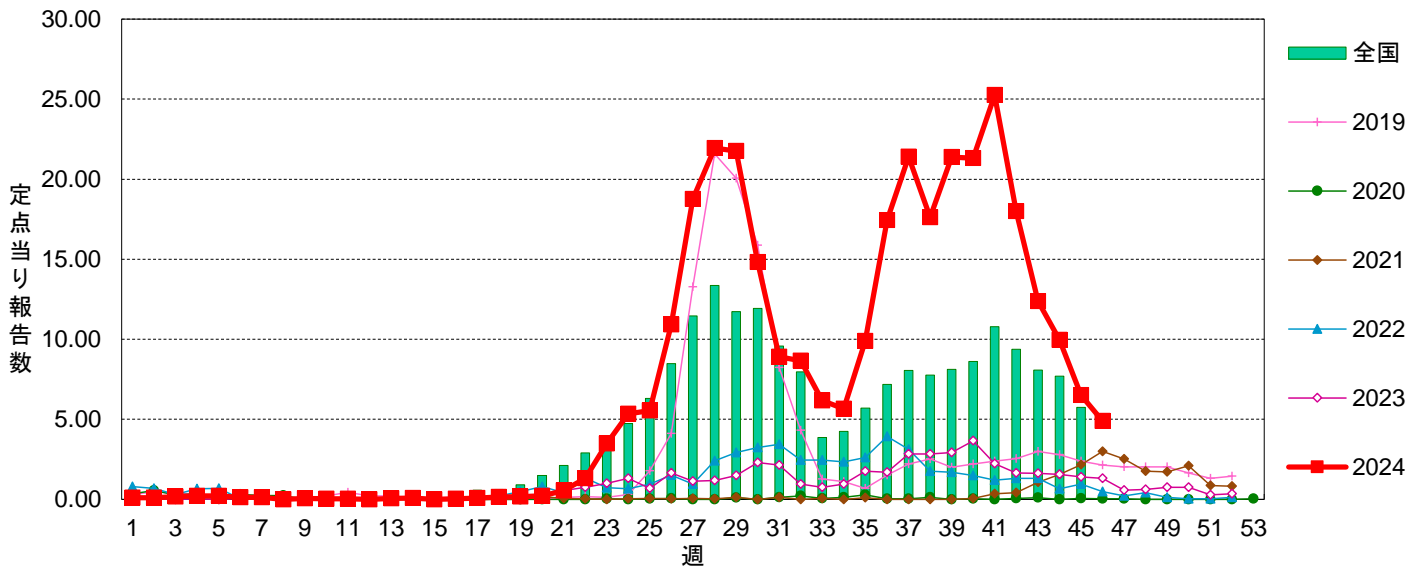


定点当り報告数グラフ

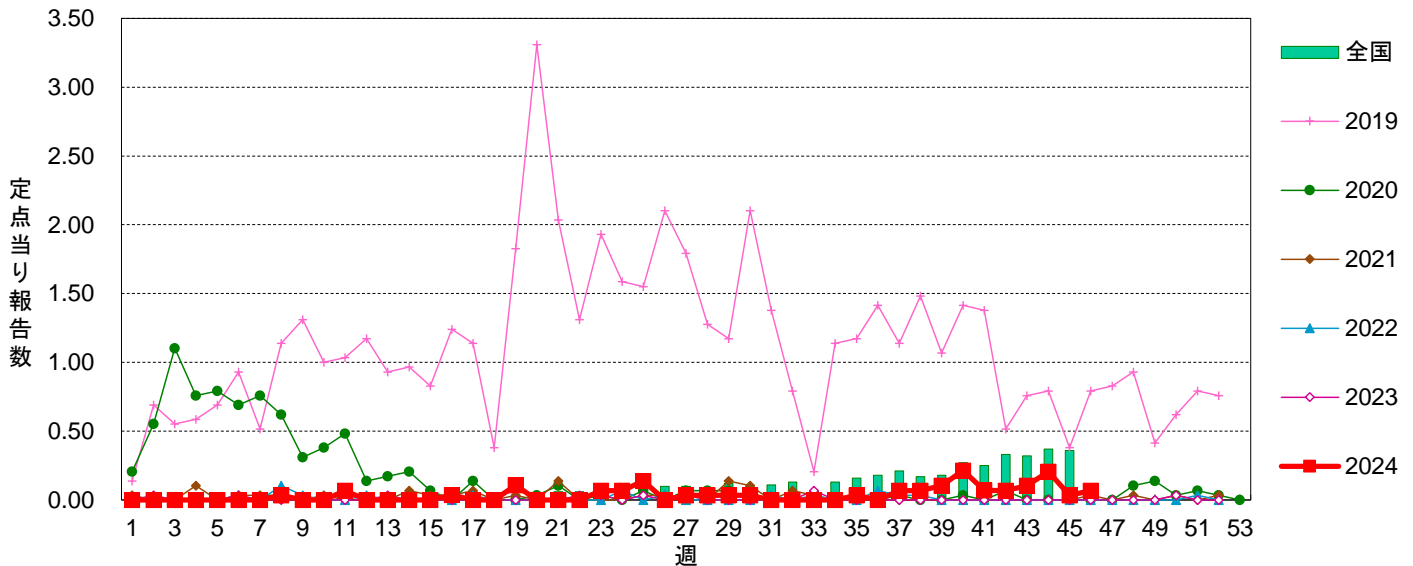
### 水痘



### 手足口病

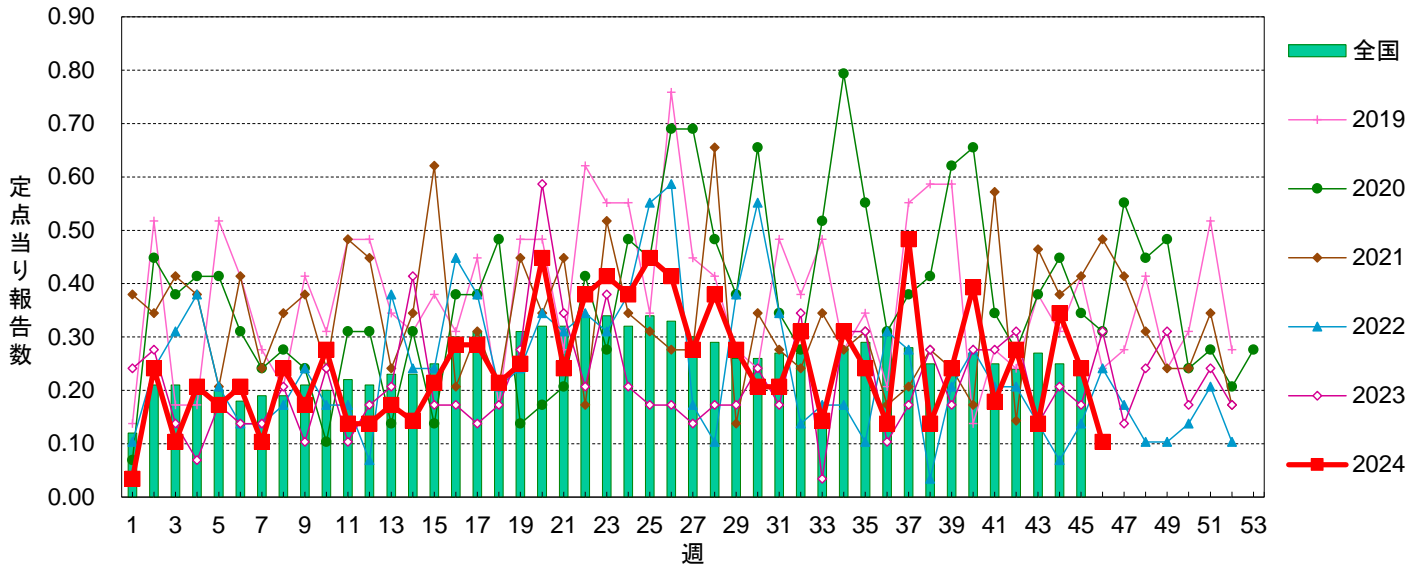


### 伝染性紅斑

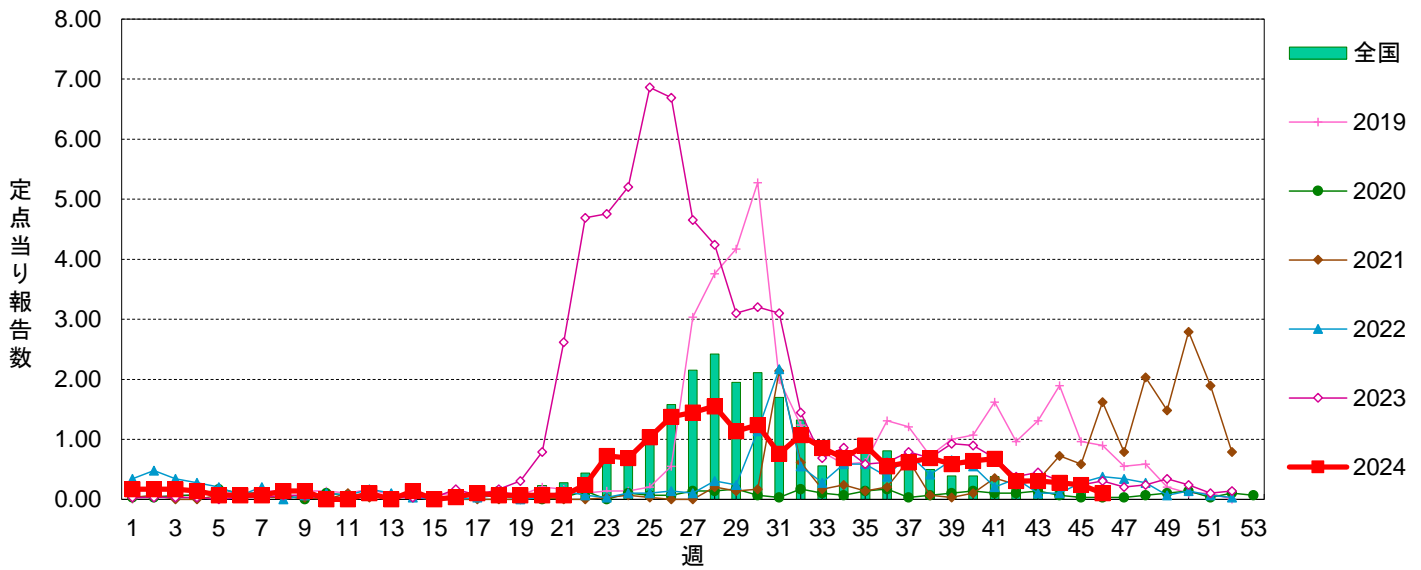


定点当り報告数グラフ

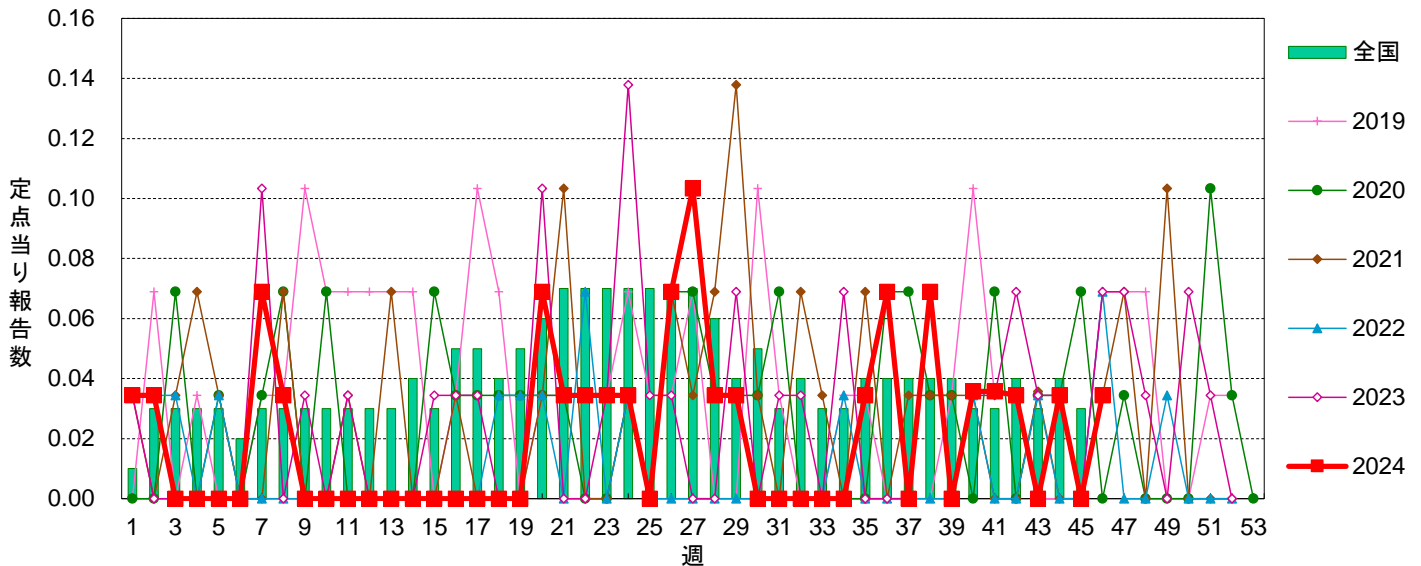
突発性発しん



ヘルパンギーナ

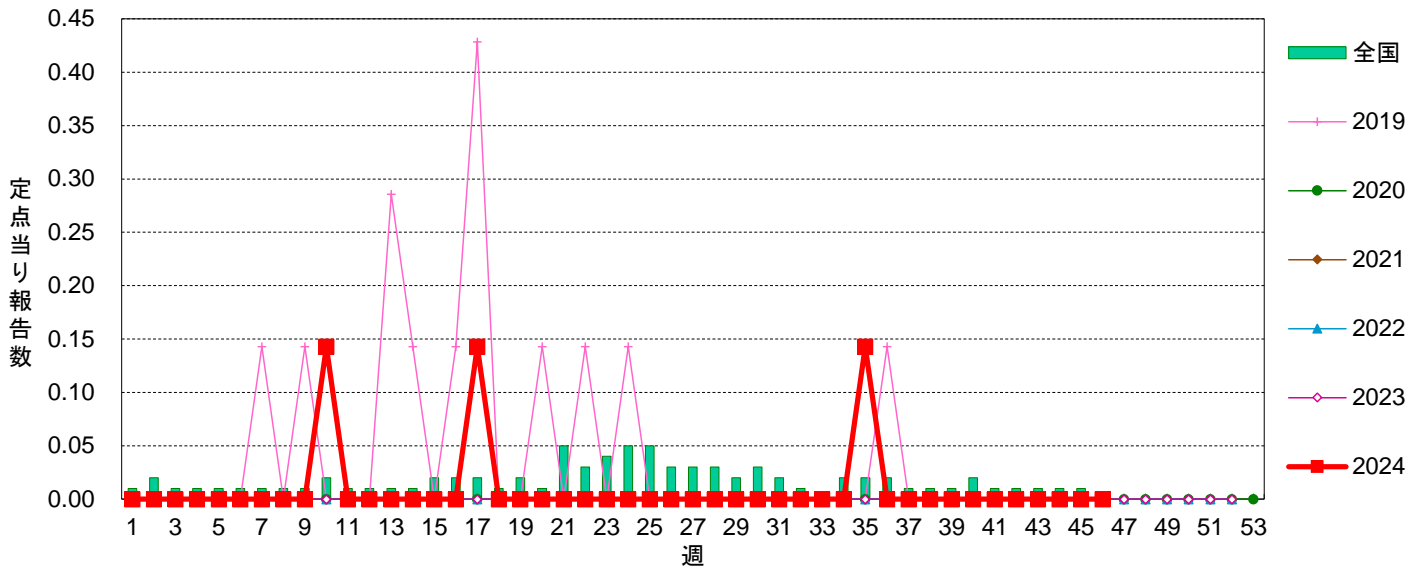


流行性耳下腺炎

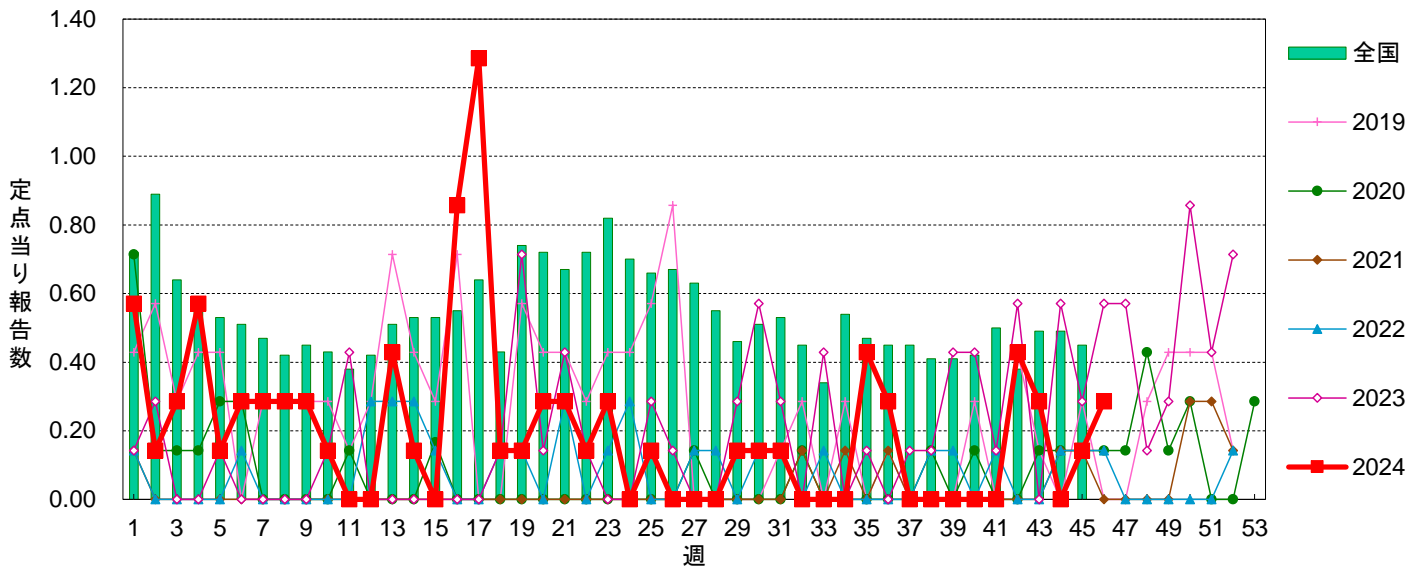


定点当り報告数グラフ

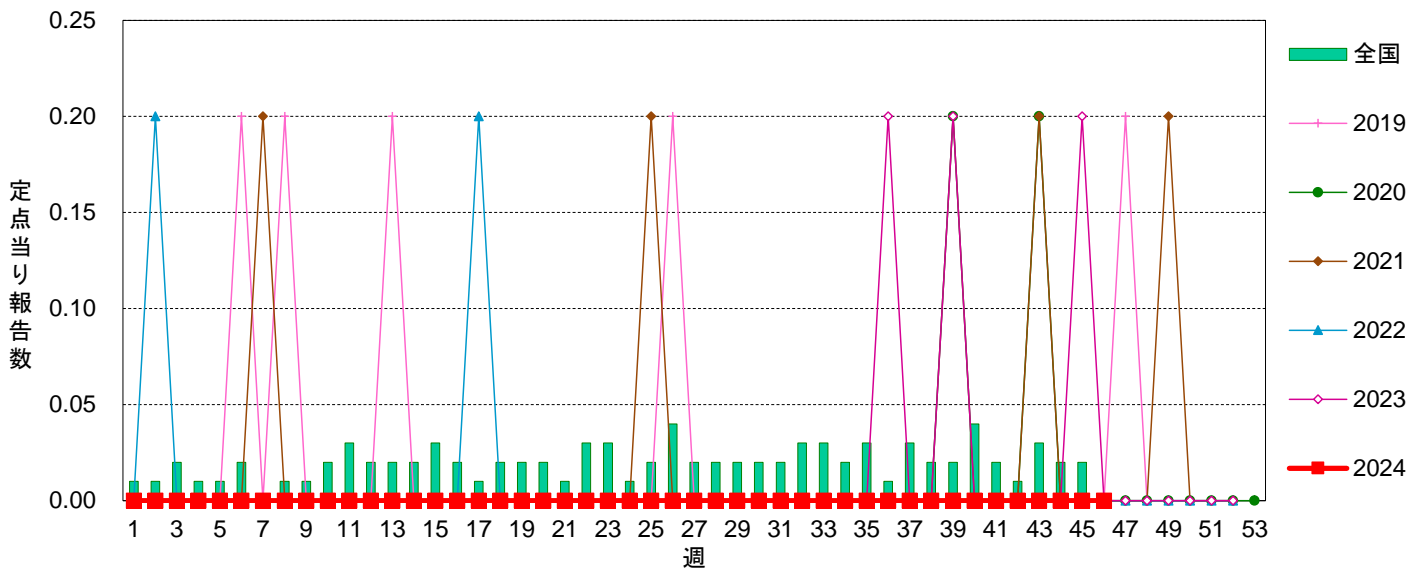
### 急性出血性結膜炎



### 流行性角結膜炎

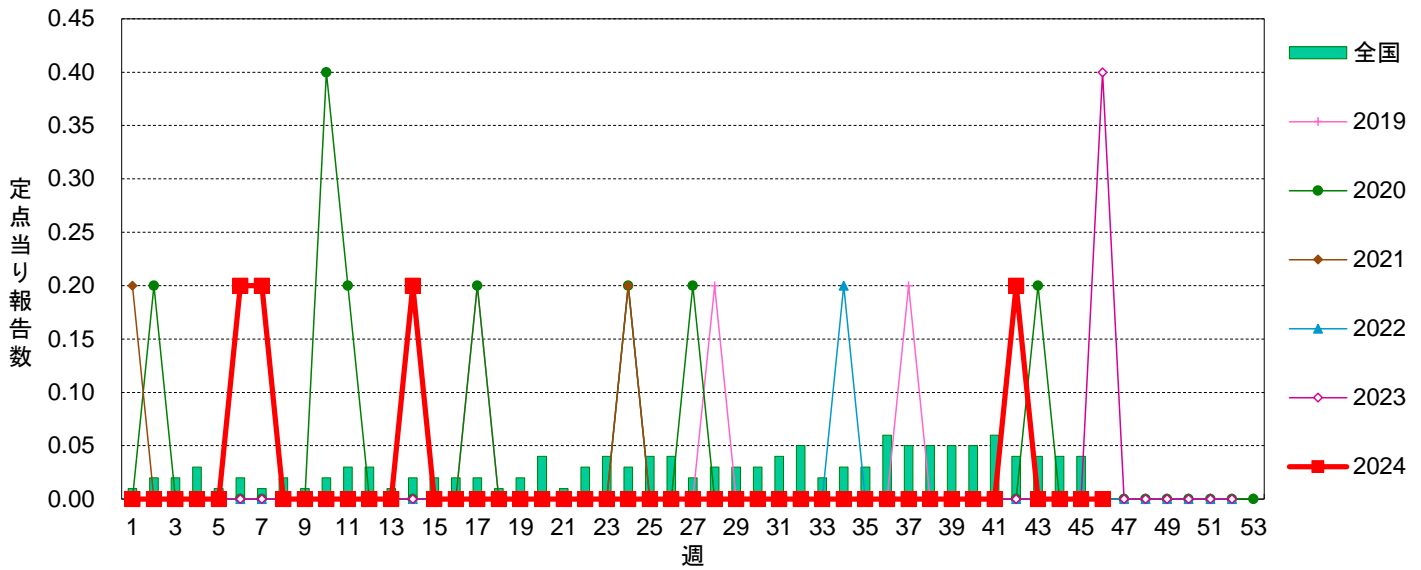


### 細菌性髄膜炎

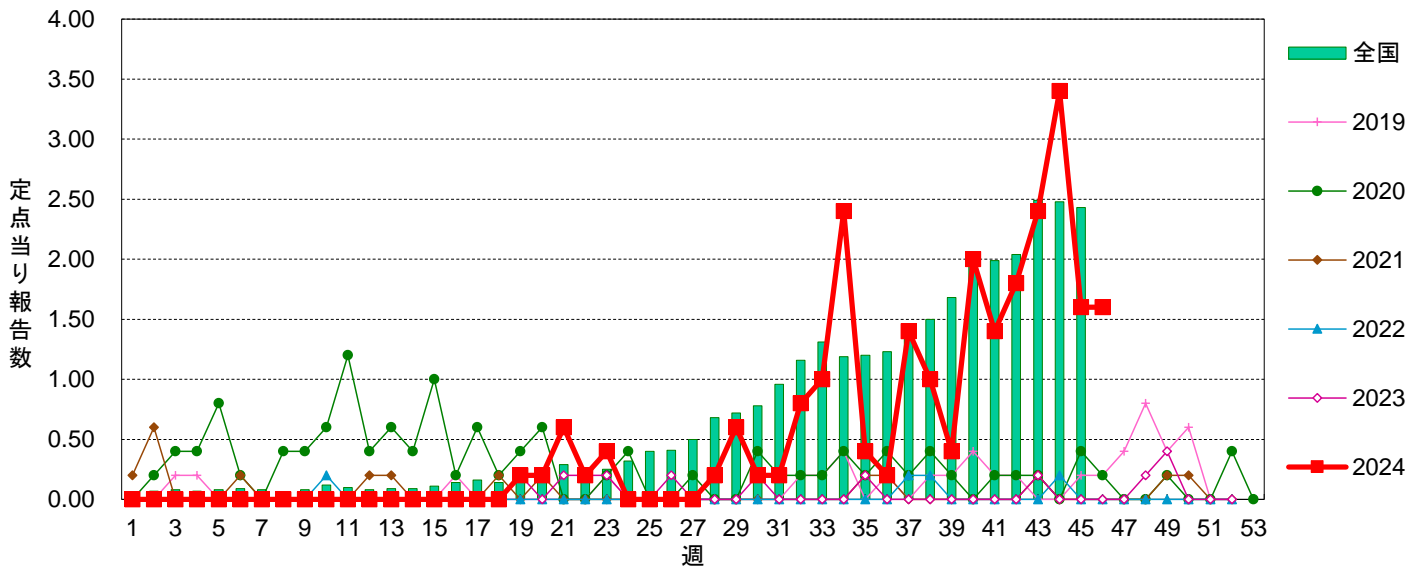


定点当り報告数グラフ

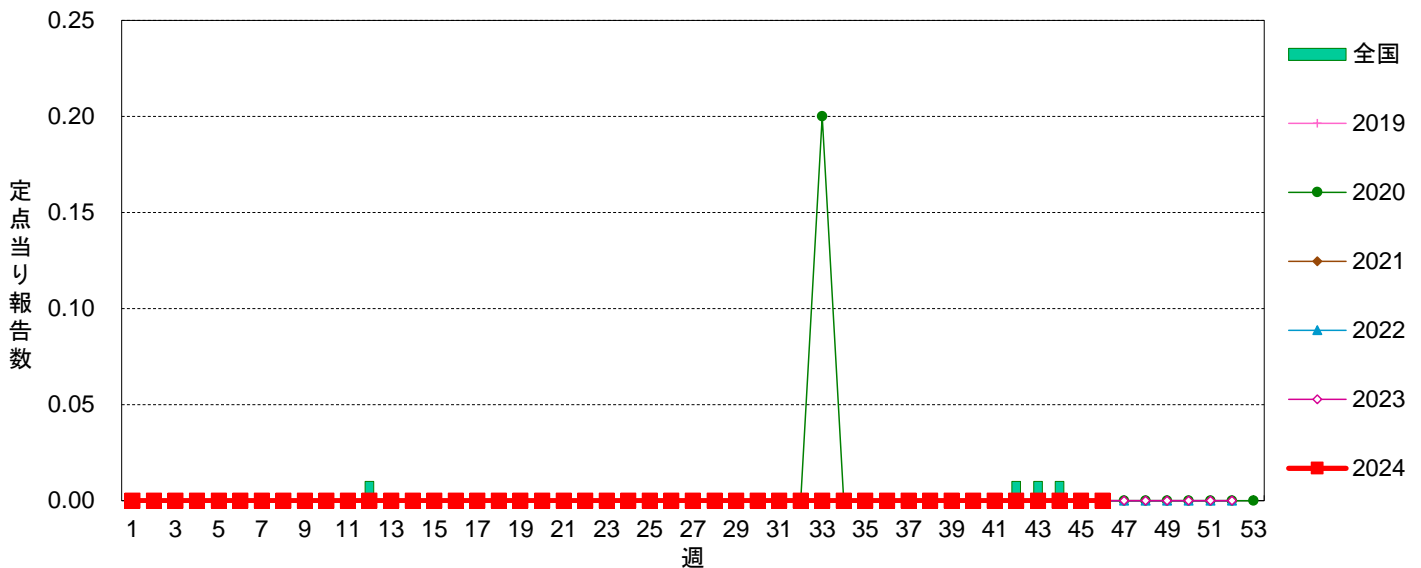
### 無菌性髄膜炎



### マイコプラズマ肺炎



### クラミジア肺炎



定点当り報告数グラフ

### 感染性胃腸炎(ロタウイルス)

