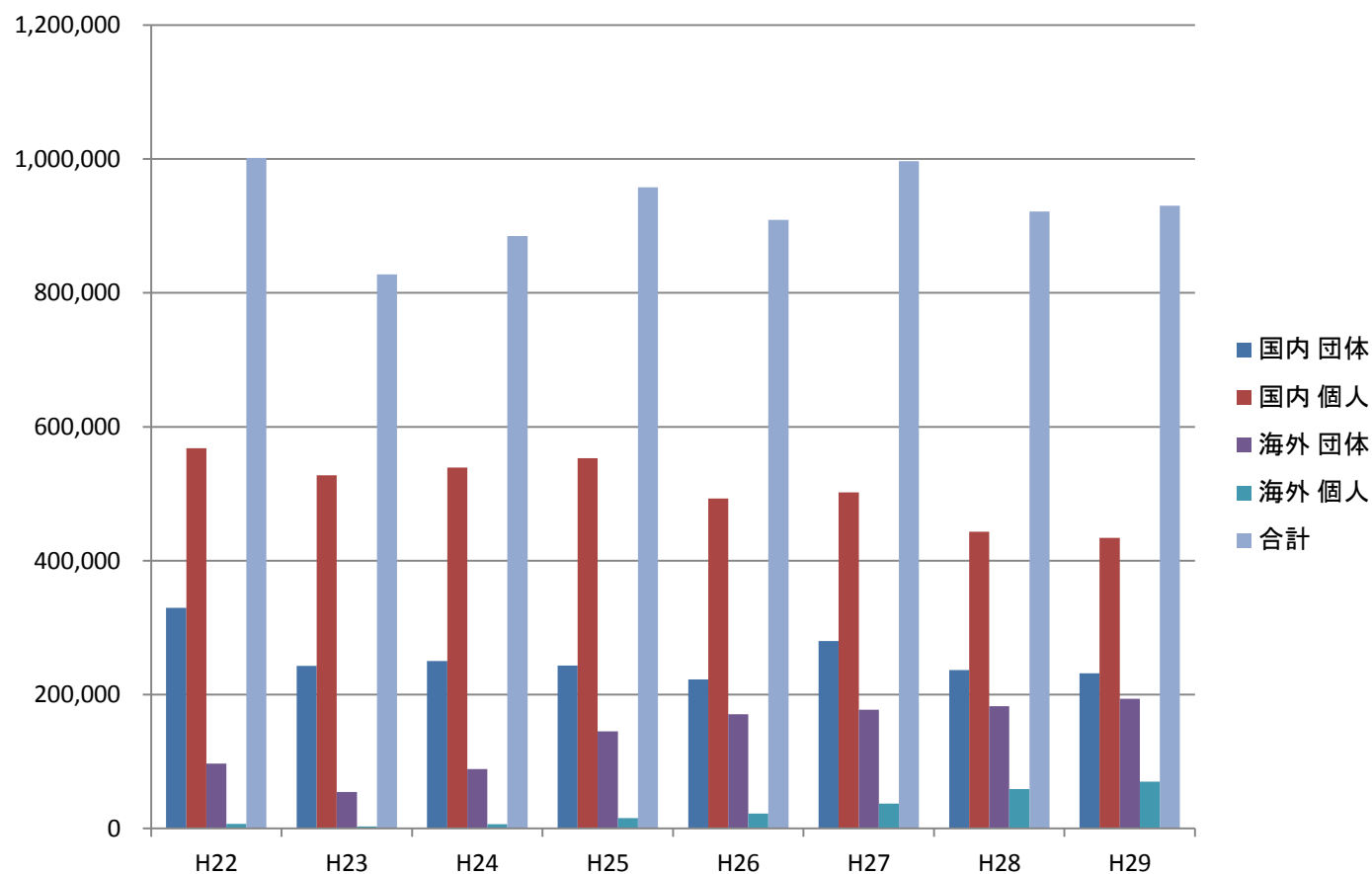


## 国内客と海外客の推移

(単位:人)



	国内				海外				合計	前年比
	団体	個人	計	前年比	団体	個人	計	前年比		
H22	329,600	568,000	897,600	93%	97,000	6,800	103,800	142%	1,001,400	97%
H23	242,800	527,300	770,100	86%	54,400	2,900	57,300	55%	827,400	83%
H24	250,300	539,200	789,500	103%	89,000	6,400	95,400	166%	884,900	107%
H25	243,600	552,900	796,500	101%	145,300	15,800	161,100	169%	957,600	108%
H26	222,700	492,800	715,500	90%	170,800	22,500	193,300	120%	908,800	95%
H27	280,200	501,900	782,100	109%	177,300	37,400	214,700	111%	996,800	104%
H28	236,800	443,100	679,900	87%	182,700	59,100	241,800	113%	921,700	92%
H29	231,500	434,500	666,000	98%	194,000	69,000	263,000	109%	929,000	101%